



**EXPORT
ILLUSTRATED PARTS CATALOG**

Before ordering please make sure you are referencing the latest revision.

REV. 07.15.2010



ILLUSTRATED PARTS CATALOG



Plumbing Repairs 4-5

Wall fittings and Gaskets 6-7

Micro jets & Jet Assemblies 8-9

Light Assemblies 10

Air Control Assemblies 11

Air Control Assemblies/ Ozone 12

Plumbing 13

T300+ Seat and Tensile Band 14

Lid Tarps and Filters 15

Pumps 16-17

Seal Kits & O-Rings 18

Impellers 19

Plumbing 20

Hose & Clamps 21

PC Board/Filter/Relay 23

Upper Controls 24

Sensor & Motor Cables 25

GFCI's 26

Switches/ Relay/ Light Components 27

Strain Relieves 28

Jumper Wires 29

Extrusions 30

Foam 31

Lids 32

Tools 33-36

Misc: Glue, Forms, Etc 37



If you hit "CTRL F" you can search by part number or description

Plumbing Repairs



2211900

Description: Jet Back 1"x 3/4"
Usage: "T" Series Plumbing
Info: Current Style Plumbing



9014500

Description: Pipe Extender 1 1/2"
Usage: Union Repair
Info: Pre "S" & P-3 PAK, use with 9013200



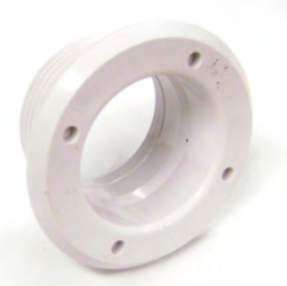
9010500

Description: Coupling - 1"
Usage: Pre "S" Series Tubs
Info: for air control repairs



9007600

Description: GREY Jet Wall Fitting
Usage: "T" Series Plumbing
Info: Standard jet fitting for all tubs
Replaces part#9017100 black fitting



9009200

Description: FLANGE WALL FITTING
Usage: T-300+ TUBS
Info: SMALL MICRO JETS



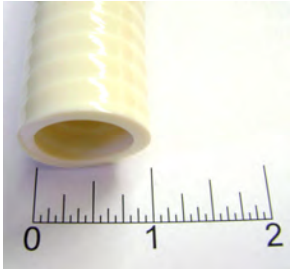
9010200

Description: 1-1/2" FlexHose (SPAFLEX)
Usage: "S" & "T" Series Plumbing
Info: Unit of Measure - 1ft.



9010300

Description: 1" Flex Hose (SPA FLEX)
Usage: "S" & "T" Series Plumbing
Info: Unit of Measure - 1ft.



9010900

Description: 3/4" Flex Hose (SPA FLEX)
Usage: "S" & "T" Series Plumbing
Info: Unit of Measure 1 - ft.

Plumbing Repairs

EXP 07/15/10



9027902

Description: Split Nut With Screws

Usage: P25 & P26

Info: Digital Control Packs Only



9013200

Description: half-Union, tub side

Usage: Repair of P-3 tub unions

Info: Use with 9014500



9027000

Description: Light lens and O-ring (for seat)

Usage: All tubs with lights in Seat
(Assem 9028500)

Info: Lens, O-ring



9028200

Description: Light Lens for LED Light

Light on Wall of Tub

Usage: T-300+ Tub starting serial# T-118262 & all TM-

Info: 2005500 Gasket



2210800

Description: Hose Bushing

Usage: "S" & "T" Series Plumbing

Info: Tub side blue hose



2005500

Description: GREY gasket

Usage: LED light lens 9028200 &
Jet Wall Fitting 9007600

Info: Located between wall fitting & liner

DRAIN REPAIRS (SUCTION) PRE VGB

Please note there are a set of T- & TM- serial numbers. These parts are for tubs with the following serial #s

T140: ANY T- TUB AFTER T-90369 & ALL TM- TUBS TM-43011* AND BEFORE

T220: ANY T- TUB AFTER T-90338 & ALL TM- TUBS TM-43011* AND BEFORE

300+ ANY T- TUB AFTER T-90357 & ALL TM- TUBS BEFORE #TM- 43077*

***EXCEPTIONS:** Tubs with the following serial numbers should use the VGB compliant parts on the next page:

TM-42796, TM-42981, TM-422984, TM-42989 & TM-42990



2210400

Drain Harness Elbow

Description: Jet Back 1" x 3/4"



9012200

Description: WHITE gasket

Usage: "S" & "T" Series Plumbing



9007800

Description: 3-7/8" Suction Cover

Info: REPLACED W/ 9007815-1

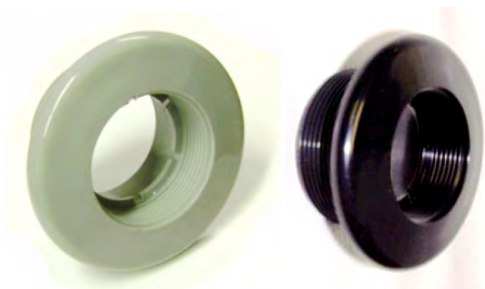


9007815-1

Description: 5-1/4" Suction Cover Kit

Usage: Use with 1-1/2" Drain Wall Fittings (9007700, 9011900, & 1210820)

Replaces 9007800 & 9011600



9007700 & 9011900

Description: Drain Wall Fitting 1-1/2"

Usage: "T" & "S" Series Plumbing

Info: Soon to be REPLACED W/ 1210820



1210820-1

Description: Drain Wall Fitting 1-1/2"

Info: Replace 9007700 & 9011900

Wrench (9015620) Required for Installation

DRAIN REPAIRS (SUCTION) VGB

THESE PARTS ARE ONLY FOR USE WITH TUBS WHOSE SERIAL NUMBER STARTS WITH TM-, NOT TUBS WHOSE SERIAL NUMBER STARTS WITH T-

On 140 & 220 Tubs Serial #TM-43012* and after & 300+ Tubs Serial #TM- 43078* and after

***EXCEPTIONS:** The following serial numbers should use the parts on this page

TM-42796, TM-42981, TM-422984, TM-42989 & TM-42990



9007120-S

Description: Drain Harness Elbow Assem
Used on Drain Harnesses



9007115

Description: Suction Drain Gasket
Usage: Use with 9007705



9007807-S

Description: 5-1/4" Suction Cover and Screws
Usage: Use With 2-1/2" Drain Wall Fitting
(9007705)



9007705

Description: 2-1/2" Drain Wall Fitting
Usage: Use with Gasket 9007115

MICROJETS & JET ASSEMBLIES

EXP 07/15/10



9007900

Description: GREY nozzle, small jet - spinning
Usage: DIGITAL CONTROL TUBS, 300+ Therapy Seats
Info: GREY Spinning / Whirly Jet



9008000

Description: GREY nozzle, small jet - adjustable
DIGITAL CONTROL TUBS, 300+ Therapy Seats
Info: Adjustable - stationary nozzle



1009700

Description: Jet Assembly, small jet 300+
Usage: 300+ Therapy Jets
Info: Complete assembly
INCLUDES GASKET AND SPACER-NOT



9007901

Description: Therapy jet repair kit
Usage: All therapy jets
Info: Includes white insert, retaining clip & rear silicone gasket



2220005

Description: Stream jet internal
Note: Must order W/ P/N 2220010 to replace complete jet nozzle.
Info: Replacing jet nozzle 9007500



2220010

Description: Direct jet face
Usage: "T" Series Plumbing
Info: Replacing jet nozzle 9007500

MICROJETS & JET ASSEMBLIES

EXP 07/15/10



9007500

GREY nozzle, Jet comfort-flo

Usage: "T" Series Plumbing

Replaced by 2220005



9017900

Description: Jet Seat Ring

Usage: "S" & "T" Series Plumbing

Info: Jet Internal

For jet part #9007500 & 2220005



2220030

SPIN JET

Interchangeable with Jet Face 2220010 & 2220015



2220015

X-Stream Spinning Jet

Usage: 300+ TUBS

Interchangeable with Jet Face 2220010 & 2220030



2005600

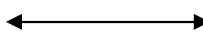
Jet Spacer (Therapy Jet)

Usage: 300+ Therapy Jets



9009500

Jet Gasket (Therapy Jet)



ORDER 2005600 & 9009500 TOGETHER

LIGHT ASSEMBLIES

EXP 07/15/10



9028500

Description: Complete Light Assembly

Usage: All tubs with light on seat

Info: housing, wire harness, lens and bulb



1124600

Description: Wire assembly 300+

Usage: Wiring for light on seat



9028205

Description: LED White Light Assy.

Usage: T-300+ Tubs with light on wall



9028210

Description: LED multi color light

Usage: T-300+ Tubs with light on wall

NOTE: We have a limited quantity of these. When we run out they will no longer be available. They will be replaced with 9028210.

NOTE: All Lights on the wall of the tub are interchangeable

AIR CONTROL ASSEMBLIES

EXP 07/15/10



9013700

Description: 1/2 turn air control assembly

Usage: Pre "S" Series Plumbing

Info: air control over each individual jet



9018200 (Replaces 90174)

Description: 1/4 turn air control assembly

Usage: "S" Series Plumbing

Info: 1 Located on side of tub



1009600

Description: 3/4" hose - Standard Pack

Usage: P-8, P-9, P-15

Info: FOR SHORT PACKS ONLY



1004300

Description: 3/8" Hose- Pre 3/4" Hose

Usage: All P15 with 3/8" Air Line

Info: Used Until May 1999



1009300

Description: 3/4" Hose-Tall Pack

Usage: P-15MT, P-24

Info: All Tall Packs (Non-Digital)



1009800-S

Description: 3/4" Hose P-25

Usage: All Digital Packs

AIR CONTROL ASSEMBLIES/ OZONE



1009810

Description: 4" Air Control Assembly

Usage: All P27 and P26 w/Ozone

1009815

Description: 4.5" Air Control Assembly

Usage: P26 with out Ozone

DIFFERENT LENTHGS ARE REQUIRED FOR DIFFERENT PACKS



2110400

Description: 1" Clear Hose

Usage: Hose for 3/4" air control



9039600

Description: Hose Clamp

Usage: 3/4" air line



9027018

Description: Ozinator Check Valve

Usage: Packs with 3/8" Air Control Lines



9012610

Description: Ozone Barbed Fitting Tee

Usage: All Packs with Ozone

PLUMBING

PLEASE NOTE: There are two sets of tub serial numbers T-00000 and TM-00000. It is important that you reference the correct set when ordering parts. Any Jet or Drain Harnesses Prior to the ones listed on this page is no longer supported .



T300				
PART #	DESCRIPTION	EFFECTIVE SERIAL #	ENDING SERIAL #	EFFECTIVE DATE OF CHANGE
1010100	JET HARNESS T300 3 JETS OVER SEAT	T-90357	T-148000	3/15/2001
		TM-00000	TM-43077	
1010105	JET HARNESS2 SPIN JETS OVER SEAT	TM-43078	CURRENT	5/18/2009
T220				
PART #	DESCRIPTION	EFFECTIVE SERIAL #	ENDING SERIAL #	EFFECTIVE DATE OF CHANGE
1010300	JET HARNESS T220, 2001	T-90338	T-148000	3/15/2001
		TM-00000	CURRENT	
T140				
PART #	DESCRIPTION	EFFECTIVE SERIAL #	ENDING SERIAL #	EFFECTIVE DATE OF CHANGE
1010500	JET HARNESS T140, 2001	T-90369	T-148000	3/15/2001
		TM-00000	CURRENT	



T300				
PART #	DESCRIPTION	EFFECTIVE SERIAL #	ENDING SERIAL #	EFFECTIVE DATE OF CHANGE
1010200	DRAIN HARNESS T300, 2001	T-90357	T-148000	3/15/2001
		TM-00000	TM-43077	
1010205	DRAIN HARNESS 300VGB	TM-43078	CURRENT	5/18/2009
T220				
PART #	DESCRIPTION	EFFECTIVE SERIAL #	ENDING SERIAL #	EFFECTIVE DATE OF CHANGE
1010400	DRAIN HARNESS T220, 2001	T-90338	T-148000	3/15/2001
		TM-0000	TM-41736	
1010405	DRAIN HARNESS T220	TM-41737	TM-43011	1/21/2009
1010410	DRAIN HARNESS T220 VGB	TM-43012	CURRENT	5/18/2009
Exceptions: TM-42981, TM-422984, TM-42989 & TM-42990 use Drain Harness # 1010410				
T140				
PART #	DESCRIPTION	EFFECTIVE SERIAL #	ENDING SERIAL #	EFFECTIVE DATE OF CHANGE
1010600	DRAIN HARNESS T140, 2001	T-90369	T-148000	3/15/2001
		TM-00000	TM-41609	
1010605	DRAIN HARNESS 140	TM-41610	TM-43011	1/21/2009
1010610	DRAIN HARNESS 140 VGB	TM-43012	CURRENT	5/18/2009
Exception: TM-42796 use Drain Harness # 1010610-1				

T300+ SEAT AND TENSILE BAND

EXP 07/15/10



2004600

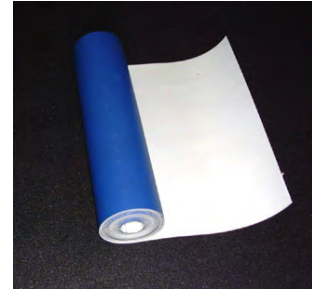
Seat- Light on Wall

2004300

Seat- Light on Seat

Usage: Seat for 300+ tubs Info: Seat only, installation requires 2 each of Strap and retainer button

NOTE: You must specify if light is on the seat when ordering



9040300

T-140 / T220 —5 yards

9043900

T-300 / 300+ — 6 yards

Description: Tensile band

Usage: Reinforcement banding used on the inside Tub body



9032400

Description: Retainer button for securing Seat in 300+

Usage: For mounting of seat in 300+ Tubs
Info: Used with hold-down strap P/N 9032500.
2 buttons required per seat



9032500

Description: Hold-down strap for Seat in 300+
Usage: For mounting of seat in 300+ Tubs
Info: used with retainer button P/N 9032400.
2 straps required per seat

LID TARPS AND FILTERS

EXP 07/15/10



9059300 per yd

1059300 — FOR T-140 Cut To Size

1059302 — FOR T-220 Cut To Size

Description: Black Lid Tarp

Used on underside of Non-folding lids

Info: Use automotive or craft store type SPRAY
ADHESIVE for attaching



9044140— T140

9044220— T220

9044000—T300+

Description: Replacement Straps for
Flip Lids



1280100

Black Filter Sock Long 30 Sq. ft.



1280001

Blue Filter Sock Short 25 Sq. ft

1280101

Blue Filter Sock Long 30 Sq. ft.



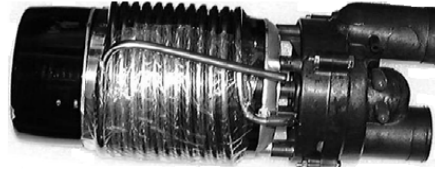
2005400

Description: Filter 30 Sq Ft
Suction Cover Diameter 3 7/8"



2003905

Description: Filter VGB 30 Sq Ft
Suction Cover Diameter 5 1/4"



1101610

Description: 1 HP MOTOR

Usage: P4, P5, & P15

Info: Standard Pump



1902607-S

Description: 1 Speed

Usage: P25 & P26

Note: Use 1902755 for P27 to P26 conversion



1902740-S

Description: P27 SYLLENT
PUMP AND PLUMBING

PUMPS



2110600

Description: Front Pump Volute
Usage: P-5, P-15 & P-24 Packs
Info: Dry well temperature sensors only



9092000

Description: Back Pump Volute
Usage: May be used
P-4 through P-24 Packs



9028905

Description: Front pump housing
Usage: Aqua Pumps (P25 &



9028906

Description: Rear pump housing
Usage: Aqua Pumps (P25 & P26)



9027905

Description: Capacitor
Usage: Digital Control Packs (P25 & P26)



1902755

Description: Conversion Kit P27 to P26 Pump Assembly
Usage: Replacing a P27 pump with a P26 pump
Note: Includes all parts required for conversion

SEAL KITS & O-RINGS

EXP 07/15/10



9090200

Description: ITT seal kit

Usage: P-3

Info: Itt Pump Motor



9092100

Description: 2 piece pump seal

Usage: P-5 through P-24, New P-3's

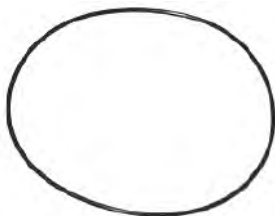
Info: Serial # 57650 up to P-24



9029000

Description: Seal Kit, P-25

Usage: All Digital Packs



9090900

Description: O-Ring (pump)
Usage: P-4 through P-24 Packs

Info: Seats in rear Volute



9029200

Description: O-Ring,
(Aqua flo pump)
Usage: P-25 Digital Packs



9014100

Description: O-Ring,
Usage: Split Nut

IMPELLERS

EXP 07/15/10



9029301

Description: Impeller 1HP (AquaFlo Pump)

Usage: P25 & P26

Digital Control Packs Only



9091800

Description: Impeller VICO

Usage: P16 Packs



1010700

Description: P26 Lower Plumbing
Assembly

Usage: P25 & P26



1010800

Description: P26 Upper Plumbing
Assembly

Usage: P25 & P26



1010820-S

Description: Mundial Lower Plumbing Assem

Usage: P27 Serial # 200000-200965

For 200930-200933 use 1010808-S



1010815-S

Description: Mundial Upper Plumbing Assem

Usage: P27 Serial # 200000-200965

For 200930-200933 use 1010808-S



1010808-S

Description: P27 Lower Plumbing
Assembly

Usage: P27 Serial # 200966 & After
& 200930-200933



1010807-S

Description: P27 Upper Plumbing
Assembly

Usage: P27 Serial # 200966 & After
& 200930-200933

HOSES AND CLAMPS

EXP 07/15/10



NO LONGER AVAILABLE

2110200

Description: Red Hose (Cut)

Usage: Replaced with 9012100



9015200

Description: Clear Hose (Cut)



9012100

Description: REINF Clear Hose (Cut)

Use with 9036610

Usage: Front of pump all Packs

Info: P4 Through P26

*Sold in 1 foot lengths



NO LONGER AVAILABLE

9016802

Description: Blue Hose (Cut)

Front of Pumps

Replaced with 9016810



9016810

Description: PAH free Clear Hose (Cut)

Front of Pumps



9036610

Description: Small hose Clamp

USAGE: With 9012100

3/8" Hose, Red & Clear

REPLACED 9036500



9027017

Description: Ozonator Hose Clamp

All Packs with Ozonator



9036300

Description: Hose Clamp #40

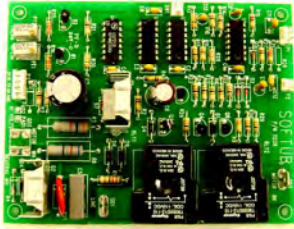
Blue/Clear Hose

Connection

Usage: P4- Current

PC BOARDS/ FILTER / RELAY

EXP 07/15/10



1122600

Description: Control P.C. Board 120 Volt

Usage: P-3C4 through ST25

Info: relays mounted on board



1121400

Description: Control P.C. Board 220 Volt

Usage: P-16



9037622-S

Description: Control P.C. Board 220 Volt

Usage: P25 to Current Digital Packs

Info: relays mounted on board



9037100

Control Board Support

Usage: Digital Packs



9027410

Filter RFI 220V 50 HZ

Usage: Digital Packs



9037635

PCB Rectifier Bridge

Usage: All Digital Packs w/ozone

UPPER CONTROLS

EXP 07/15/10



1100800

Description: Control Panel P5

Usage: P5

Info: Graphics may differ, same operation



1102200

Description: Control Panel, P-15

Usage: P-15



1106904-S

Description: Digital Control Panel

(With Light)

Usage: P25 to Current



1106903-S

Description: Digital Control Panel

(No Light)

Usage: P25 to Current

AIR CONTROL NOT INCLUDED

SENSOR & MOTOR CABLES

EXP 07/15/10

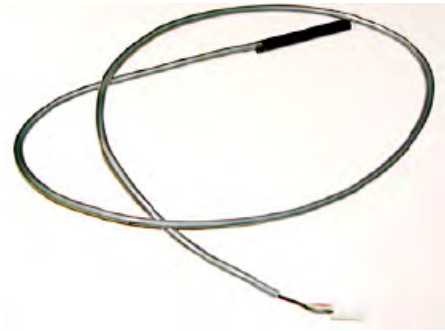
NO LONGER
AVAILABLE



1121300

Description: Probe Assembly C2 PVC

Usage: Replaced with **1124800-S**



1124800-S

Description: Cable Assembly- Sensor

Usage: P25 to Current

Info: Digital Control Packs Only



1121105

Description: Motor Cable Assembly P26

Info: Motor to Control Box



9035800

Description: Strain Relief

Usage: All P25 Packs

Info: Part #1254

GFCI'S



1120800-S

Description: GFCI with terminals

Usage:

Info: with terminals on ends of wires.



9025400

Description: GFCI 15 AMP

Usage: 15 AMP use only

Info: Standard Plug



1124910-S

Description: GFCI 15 AMP

Usage: 15 AMP use only

Info: new inline GFCIs for all digital packs.

SWITCHES/RELAY/LIGHT COMPONENTS



9091400

Description: Start Switch– Motor

Usage: All Domestic Motors

NO LONGER AVAILABLE



XXXXXX

Description: Motor Thermal Protector



9021100

Description: G7L RELAY

Usage: All Digital Packs

NOTE: Relay may be grey or black



1107400

Circuit Board - Light

Usage: With button on control panel

Info: Works with Aqua-temp transformer

P-15MT & P-24



1125100-S

Cable Assembly– Light

Usage: P25L , P26L, & 27L

1124000-S

Usage: P-24L

INFO: Replaced with 1125100-S



1125006

Ozone Transformer with Connectors

Usage: P26 & P27



1125005

Light Transformer

Usage: P25, P26 & P27

STRAIN RELIEVES

EXP 07/15/10



9035900

Description: Strain Relief



9035700

Description: Strain Relief #1244

Used for Motor Cable

P25 to Current Motor



9128100

Description: Strain Relief #1157

Used on Light & Sensor Cables

P25 to Current



9035600

Description: Strain Relief # 1852

Used on Ozone & Control Panel

P26 to Current



9036004

Description: Strain Relief # 2865

Used on solenoid

P25 to Current



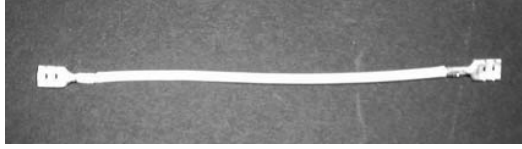
9036800

Description: Strain Relief # 1724

Power

JUMPER WIRES

EXP 07/15/10



1121800

Description: Jumper Wire—
Female to Female Connectors/White Wire



1121900

Description: Jumper Wire—
Female to Female Connectors/White Wire



1121500

Description: Jumper Wire—
Flag to Flag Connectors/Black Wire



1121600

Description: Jumper Wire— 3 Way
Flag to Flag to Small Female/White Wire

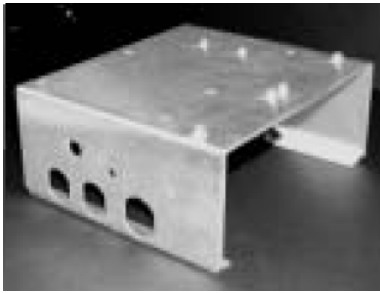


1121700

Description: Jumper Wire—
Flag to Female Connectors/Black Wire

EXTRUSIONS

EXP 07/15/10



2131710

Description: Control Box Tray

Usage: PC Board & Relay Mounts Housing

Info: Please call for applications



9036600

Description: Large Hose Clamp

Usage: P5-P26

Info: Goes around pump and control box

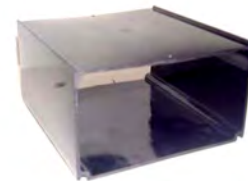


1130600

Description: Large Insulation

Usage: Pre Ozone Packs

Info: Tall Packs, Under Motor



2131320

Description: Plastic Extrusion

Usage: P26 & P27



2131325

Description: Side Box Extrusion

Usage: With 2131320



9034101-S

Description: Copper Strap Assembly

USE ON P27 PACKS IF SERIAL # IS BELOW 204331

9034110

COPPER STRAP ASSEMBLY

USE ON P27 PACKS FOR

SERIAL # 204332 AND AFTER

FOAM



2240400

Usage: S Series Tubs

NO LONGER AVAILABLE



2340800

Usage: 'S' & "T" Series Tubs

Info: 2 Large, 1 Small holes

3/4" Air Control Lines

Air Control on Packs



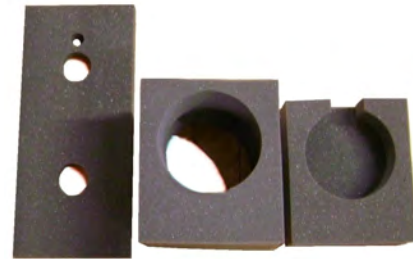
2340600

Usage: Chameleon
(C230, C280)



2341000

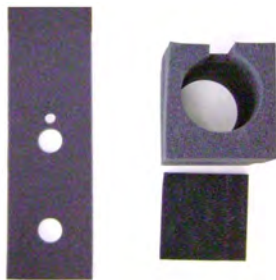
Usage: P25 & P26
Digital Packs



1130815

Description: NOISE REDUCER FOAM

Usage: P27 Pumps



1130900

Description: NOISE REDUCER FOAM ASSM

Usage: P26 Pumps



2140800

Description: Foam Pack Shell

Usage: Digital Packs

Note: Can be Used for older models.

Indicate pack model when ordering

NO LONGER
AVAILABLE



EPS STYLE LID

Usage: S & PRE S SERIES TUBS

NO LONGER
AVAILABLE



97 STYLE SOLID LID

FOR IDENTIFICATION PURPOSES ONLY



FOLDING LIDS

T140 P# 14018-XX

T220 P# 14019-XX

T300 P# 14016-XX

C230 & C280 Call for #



FOLDING LID INSERTS

T140 P# 9028503

T220 P# 9028502

T300 P# 9028501

C230 P# 9028700

C280 P# 9028800



2220020

Description: Wrench for Jet Intern.

Usage: New Jets



9014400

Description: Wrench– Pyramid

Usage: Drain/Suction Fitting Settings

Info: Old Jets, Old Wall & New Safety



9017800

Description: Jet Wrench

Usage: S & T Series Tub

Info: All Sizes



9028410

Description: Metal Light Fitting Tool

Usage: Removes Lens & Wall Fitting

Info: All Tubs with Lights



9028400

Description: Wrench Small Therapy Jets

Usage: T300+

Info: Only removes Small Micro Jet



9015600

Description: Wrench

Usage: 300 Pre S Series Tub

Info: Old 300s Only

TOOLS

EXP 07/15/10



9027800

Description: Wrench– Drain

Usage: Filter Strainer Pipe Fittings

Info: S Series W./ Filter Strainer Pipe



9017700

Description: Jet Plug

Usage: S & T Series Tubs

Info: For swapping packs on a filled tub & air testing w/ liner in place

NEW!



9017710

Description: 2-1/2" Wallfitting

Usage: Use to Plug 9007705



9014600

Description: Test Plug Suction/Drain Fitting

Usage: S & T Series Tubs



1300500

Description: Test Plug, Therapy Jets

Usage: 300+ Therapy Jets

Info: Works on all therapy Jet Fittings



1310900

Description: Test Gauge, Air Test

Usage: Both Pak & Tub

Info: P4 Through Current



9551500

Description: Buck Booster



9017705

Description: Test Plug, VGB Drain Harness

Usage: VGB Drain Harnesses

For 140 & 220 Tubs Serial #TM-43012 and after

300+ Tubs Serial # TM-43078 and after

*This is only for use with tubs whose serial number starts with TM-;
not whose serial number starts with T-*



9028420-1

Description: Cutting Guide, Drain Harness Fitting

Usage: VGB Drain Harnesses

For 140 & 220 Tubs Serial #TM-43012 and after

300+ Tubs Serial # TM-43078 and after.

*This is only for use with tubs whose serial number starts with TM-;
not whose serial number starts with T-*



9015620

Description: Wrench, Pre VGB Replacement
Wall fitting.

Info: Use to Install 1210820-1



The wall fittings with the 4 slots (1210820) require this wrench.

The wrench is a flat piece of metal that only fits in 2 of the 4 slots.



1310500

Description: Test Plug, Air System Assembly

Usage: All Tubs with Air Control on the Pack

Info: Testing Jet Harness for Leaks

NEW!



9028425-1

Description: Reskin Kit

Usage: Startup Kit for Reskins

NEW!



9028430-1

Description: Pressure Test Kit

Usage: Startup Kit for Pressure Test



9027800

Description: Magic Lube, Large 5 oz.

Usage: Wall Fittings and Gaskets



9061902

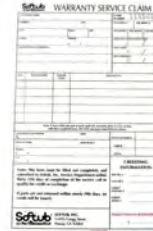


9060100

Description: Mastic

Usage: Used between motor Control

Info: Heat Transfer Material

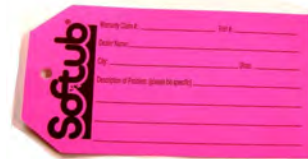


9523500



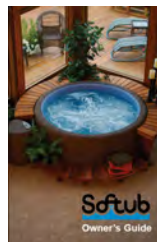
9523600

Description: Return Label



9523700

Description: Pink Return Tag



9521010

Description: Owner Manual

Call for Older Versions